

III CONGRESO CIENTÍFICO INTERNACIONAL  
“EUROCIENCIA JOVEN”

# Compatibility of plants with different watering requeriments

BY: V. GAITÁN, A. SANCHO, M. ESPEJO, M. VARONA,  
N. GARCÍA, A. QUESADA

1º BACHILLERATO - IES TRASSIERRA  
CURSO 2023/2024

SUPERVISOR: MARTA PÉREZ MADRID



# INDEX

**01**

**Introduction**

**02**

**Objectives**

**03**

**Materials**

**04**

**Methods**

**05**

**Results**

**06**

**Conclusion**





# INTRODUCTION

We worked with two originally incompatible plants, basil and citronella. They are incompatible because of the different conditions that they need to grow in.

*Ocimum basilicum*, commonly called basil, is an aromatic herb that needs a lot of water to grow. Ideally it has to be watered once or in some cases twice every day.



*Cymbopogon nardus* or citronella, however, needs to be watered three times a week in summer and once weekly in winter.



# OBJECTIVES

- **Observe how substrate and water factors affect two plants whose growth is incompatible.**
- **Get the basil and citronella to grow with an amount of water that benefits both plants.**

# MATERIALS



## Seeds

- **Citronella**
- **Basil**



## Substrate

- **Soil with perlite**
- **Soil with compost**
- **Only soil**



## 12 Pots





# METHODS



# METHODS







• SOIL PREPARATION







# RESULTS





# 1-2 WEEKS



## FIRST SHOOTS





# 3-4 WEEKS

**INTRUSIVE SHOOTS**





# 5-6 WEEKS





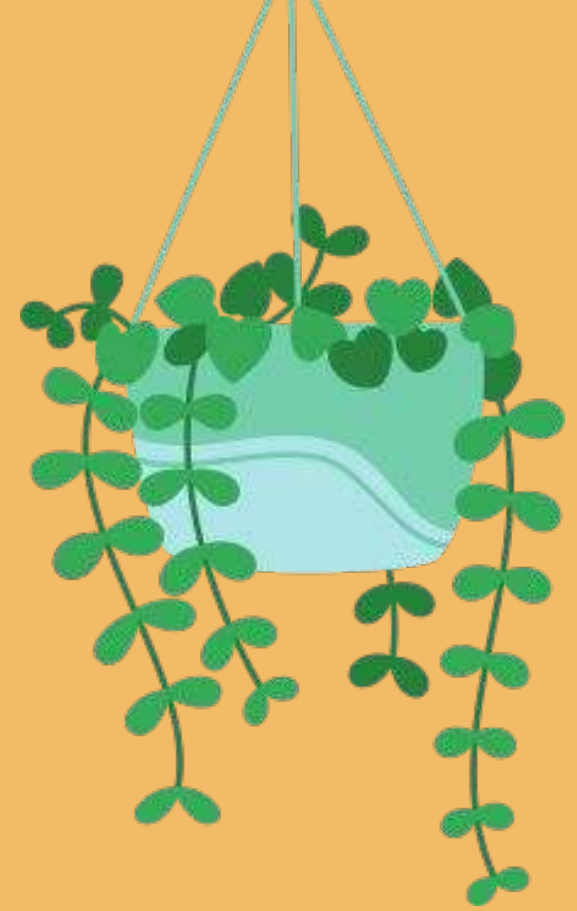


Basil		Citro-nella	Basil+ citrone-lla	Nothing	Intrusive shoots	Basil+ intrusive shoots
1	3			2		
4						
6		5	7	8		
9			11		10	12



# CONCLUSION

We can see that by planting the seeds in perlite or compost and watering them 3 days/week, basil and citronella can grow in the same space in our conditions





**Thanks for  
your attention**

